

# MINING

## Works & Services

# Our Vision

» We are a global company in the field of exploration and mining, we provides services ranging from technical consulting through Minerals Exploration programs, drilling and surface, underground mining.

» The Vision of the Kingdom of 2030 confirmed on Importance Developing the mining sector. We complying and aspiring to achieve 2030 vision goals, We dedicated our services to add value to your project throw robust mineral science applications, smart management and good leadership.

Our business model is founded on the qualification and quantification of the company managing directors on-hands experience with all aspects of the company services, and a collection of the multi-disciplinary expert's teams who collectively craft integrated business model.





# About Us



## TRUE EAST Mining Company

True East Mining Company, a Saudi company are pleased to offer a wide range of technical services including: Mineral exploration, Geological study, project management, drilling (DD, RC, RAB), land use surveying, mine design, production planning, surface mining works (Removing the overburden-drilling, blasting, loading, transporting, and crushing), underground mining and mine management. We have the fleet and the workforce with essential technical and managerial experts.

True East team has proven expert in a wide variety of geological settings and deposits types. We always adhere to current best practices in health and safety and environmental management, while ensuring that all exploration work is undertaken and completed in compliance with international standards.







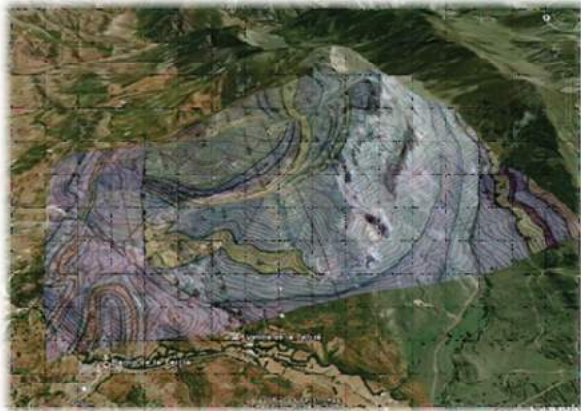


## » STRUCTURE STUDIES

Carry out the geological structures measures of faults, folds, fractures, strike, dip, lineation, foliation, fold plunge and facing, fault displacement, direction and offset value resulting from movement.

Define the structure relationship between rock units.

Identify the structure Control of the mineralization.



## » GEOCHEMICAL STUDIES

Geochemical programs design and implementation, collecting geochemical samples such as sediment, soil sample, panning sample and rock ship sample in addition to trench sample.

Alteration mapping to determine the concentrated mineral domains and to define controls on mineralization.

Generate geochemical maps to determine the spatial distribution and zones of concentration of chemical elements in rock.





## » DRILLING (CORE – CONVENTIONAL)

Core geological logging and core structural and geotechnical logging in compliance with international industry standards.

Sorting, managing and validating all drilling data (eg. collars, downhole survey, core orientation, geological, geotechnical-structure logging, photography, specific gravity, sampling and assay results)



## » LAND SURVEY

Surface elevation of the current operating interfaces of the quarry and internal roads using Total Station or Leica GNSS and RTK



## » TRAINING FOR SAFETY AND DRILLING TECHNIQUES

Applying safety first as a goal and procedures. The safety of our individuals is in the foreground and principles.

Avoiding dangers and training workers to deal with it as when occur and following safety instructions are among our most important principles.

We describes the basic job steps, potential hazards or accidents, and recommended safe job procedures for all our work steps and operations.





## I. MINING SERVICES (SURFACE MINING)

we continuously strive to be in the lead of the drilling and blasting business of Saudi Arabia and provide our customers with the most professional and cost effective solutions.

Our services include mining in the mines and quarries of the companies, in order to carry out the complete or partial mining work in the mines and quarries with the same heavy equipment that you have or with our equipment.

As well as we are ready to accept the transfer of the guarantee of workers quarry and machinery and heavy equipment on the left to be owned by the True East mining company.

True East - SATRA Mining Company offers a complete set of mining services for mining projects whether these projects exist or new (quarries - mines). Our aim is to give the customer the highest degree of mining business based on scientific foundations and proven expertise in this field which supports the decision making and strategic and developmental strategies of the project.

### WE SUMMARIZE OUR MINING SERVICES AT THE FOLLOWING:

#### » TECHNICAL ASSISTANCE

True East - SATRA Company for Mining has a highly qualified expertise that qualifies it to work as a technical assistant to provide consultations that ensure the easy operation of the work plan to meet the needs of production, through the work of drilling, blasting, loading, transport, crashing and ending with the dump.

#### » MANAGEMENT OF MINING WORKS

True East – SATRA Mining Company has the full capacity to manage all mining works (Removing the overburden, drilling, blasting, loading, transporting and crushing), including equipment and Staff, which provide the daily, monthly and annually production needs of raw materials.





## » INTERIM MANAGEMENT OF MINING

True East – SATRA Mining Company works to manage the mining works for each phase separately from the other according to customer request. For example, the mining stages can be divided into several stages as follows:

- Removing the overburden takes place as a separate stage.
- Drilling and blasting take place as a separate stage.
- Loading and transport are conducted as a separate phase.
- Crashing takes place as a separate phase.

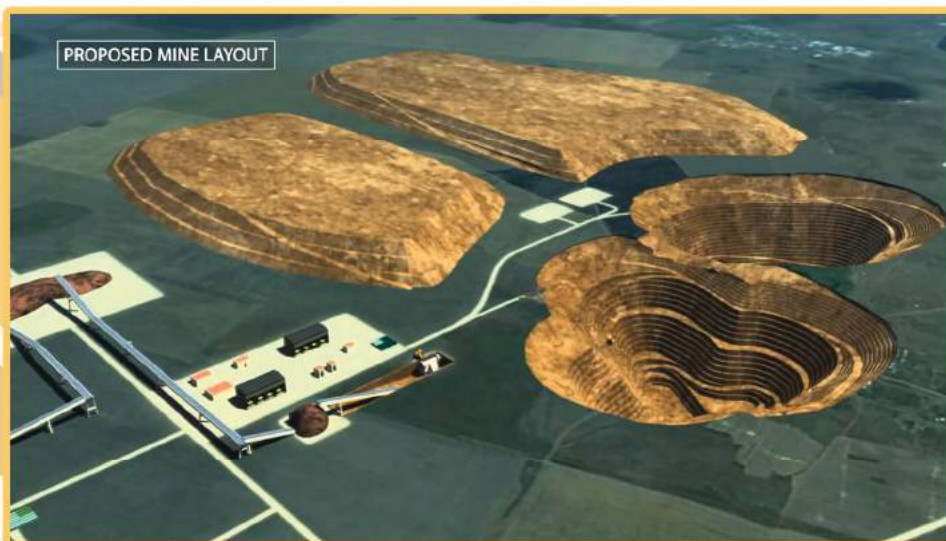
All previous works are conducted under the Management and supervision of consultants, geologists and mining engineers with great experience in this field. We are working closely with suppliers, law makers and authorities enabling us to always be updated on the latest safety standards and regulations.





## OUR MINING SERVICES

- Design of quarries and mines.
- Design of internal roads for quarries and mines.
- Design of storage areas for primary raw materials and areas of Waste materials.
- Design of geometrical blasting grid.
- Calculation of the quantities of explosives and the appropriate method of charge for the process of rock fragmentation.
- Calculate mixing percentages for raw materials that meet the quality specification.
- Select the quality of the crushers according to the hardness and quality of the rocks.
- Identification of the project needs of heavy equipment.
- Prepare a detailed plan for opening and developing the quarry or mine.
- Preparation of detailed mining plans for the extraction and development stages.
- Prepare long and short term integrated mining plans as well as production scheduling.
- Prepare detailed schedules for work periods for all mining activities on site.
- Preparation of a three-dimensional model for the presence of ore in the mine or quarry.
- Estimate the capital and operating cost of the project.





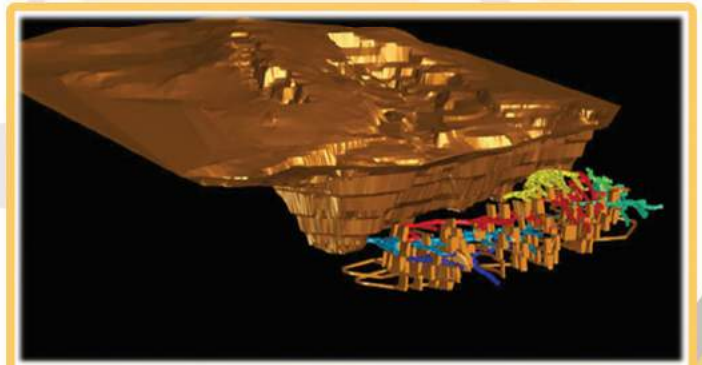
# MINING PLAN

## 2.5.1 MINING DESIGN

The quarry will be designed based on several factors, including raw thickness, nature and physical characteristics, as well as the topography of the mining area.

Accordingly, each of the following shall be appointed:

- Quarry & Mine boundaries.
- Angle of inclination.
- The height of the Benches.
- Total slope of the quarry.
- Show internal routes and maximum gradient inclination.
- Minimum space required to operate at each level.
- Orientation angles (orientation angles of interface, benches and interior roads).



## 2.5.2. MINING PLAN, DEVELOPMENT AND PRODUCTION SCHEDULING

A mining plan and production scheduling will be carried out. The mining plan is based on the thickness, height and quality of the ore consideration will be given to:

- Ensure that the required quantity and quality are achieved.
- Ensure the comprehensive development and maintenance of the quarries and benches of the quarry.
- In case of non-usable material covering the ore, it will be removed, transported to the dump area. in parallel with the extraction operations.
- Work a mining and production scheduling plan divided into several stages serving the short term (weekly and monthly) and long term (annual).
- Divide the mining plan and schedule of the production into several stages, daily, weekly and monthly, in order to ensure that the plan of extraction of the quantity and quality of the required quantity and shape of the quarry as planned.





## REMOVING THE OVERBURDEN

### QUARRY & MINE EXTRACTION BY DRILLING AND BLASTING OPERATIONS

This phase is very importance because of its role in lifting the unwanted materials and transported by the erosion factors or human factors cover of the rock, which is harmful to the quality of the product if mixed with the raw material and entered into the production stages so it is important and necessary to remove and lift.

Uses for this activity heavy equipment from Bulldozers to push the unwanted materials in a direction that does not impede the progress of the quarry and then loaded by loaders, Dumper and transport to the Waste area designated for that purpose.

Removing the overburden is divided into two ways:  
Lift loose sand and clay materials by pushing the bulldozer and then loading in the Dumpers and moving it to the place prepared for it.



This stage is a work of drill in diameters corresponding to the height of the quarry interface and with engineering dimensions called Space, Burden and Inclining Angle. All these data are pre-prepared on the Sketch chart, followed by a person- Are technically qualified for this procedure with the possession of a blasting license.

The output of the blasting operation shall be of the appropriate specifications for the sizes that enter the crusher. It shall not have a vibratory effect on the surrounding environment from the construction and foundation of the plant Measured when needed by a dedicated device.





## LOADING AND TRANSPORTATION

» The dumpers are loaded with ores from the front of the quarry's facades by loaders suitable for the nature of the work, and then transport and moving it to the place prepared for it unloading

The number of Loaders and dumpers is determined according to the capacity of the production breaker and the distance between the crusher and the quarry interfaces, preferably the appropriate number for every loader three dumpers so that there is no waste of time which in turn reflects positively on productivity and cost.



## III. UNDERGROUND MINING

» True East - SATRA has been carry out the necessities mine works to exploit deposits, through a good plan and dimensioned of the mine infrastructures like roadways, rooms and shafts, with all services to achieve to improve the mine production such as haulage systems with conveyors or discontinues with wagons and skips.

The experience and the technical capacity acquired in the execution of the all underground works both mining and Civil works, making us an excellent candidate for the implementation of the work in competition.





## UNDERGROUND MINING ACTIVITIES

» The mining method used will depend on the characteristics of the orebody, particularly thickness and dip, and the competency of the surrounding rock different methods can be used in different parts of a mine.

This type of planning is done continuously as mining proceeds and more data are acquired on the orebody configuration through underground drilling.

The choice of mining method is an extremely important decision affecting the entire mining project.

» True East – SATRA carries out any underground Project, in infrastructure and production. The experience and technical capacity acquired in the execution of all underground works in both Mining and Civil Works are our guarantee, and make us an excellent candidate for the implementation of the work in competition.

Some projects undertaken by our group are to implement roadways and inclined tunnels.

- By traditional methods of drilling and blasting with jumbos.
- With roadheader miners.
- To do underground rooms.
- Digging, support, concrete lining and equipping of vertical shafts.
- Large section tunnels digged with TBM (tunnel boring machine).
- Tunnel and machines maintenance.

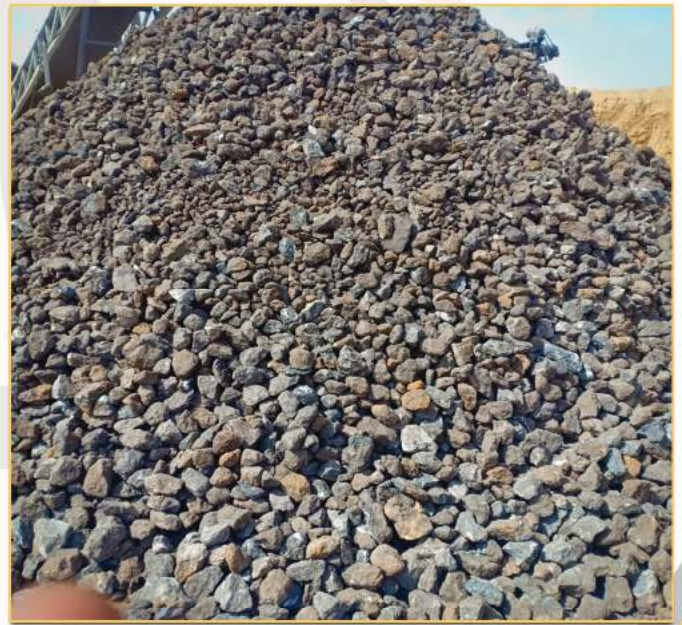




## IV. RAW MATERIALS

» We Providing all raw, corrective or additive materials (eg. Clay-Kaolin-Iron ore-Gypsum- sand , etc...)

We Providing all materials with highest and best quality in the time required





# Previous works

» We have worked and completed different projects with different deposits as : Mineral exploration, geological study, project management, drilling (DD, RC, RAB), land use surveying, mine design, production planning, Surface mining works (Removing the overburden drilling, blasting, loading, transporting, crushing), underground mining and mine management.

## **1.We have worked & achieved different projects for Base Metals :**

### **Explore for Base Metals (Gold and associated minerals)**

#### **» Artar Hawiah drilling project (prophyry copper, Gold and associated minerals)**

- Explore for Base Metals (Copper and Gold )
- Study all Geological data and previous work about the Hawiah area.
- Prepare Technical Proposal Executing a Diamond Drilling Program.
- Design and plan earth work for tracks and pads for drilling program.
- Prioritizing exploration programs to ensure results based on exploration and the optimum use of time and resources.

#### **» Artar Hawiyah Project, Second phase Drilling Services. (prophyry copper, Gold and associated minerals)**

- Plan, design, budget and manage drilling programs
- Design and plan earth work for tracks and pads for drilling program.
- Supervision of drilling program, geotechnical and geological logging.
- Sample description and dispatch.
- Manage and mentoring camp logistics.





## » Gold and Minerals Exploration project Area (Base Metals) third phase

- Supervision of drilling program
- Core orientation
- Down Hole survey.
- Measuring Core Loss/Gain (Recovery) and RQD measurements
- Capping with cement and Label
- Manage and mentoring camp logistics.

## » Almasane Al Kobra (AMAK) Exploration project Area (Base Metals)

- Supervision of drilling program
- Core orientation
- Down Hole survey.
- Capping with cement and Label
- Manage and mentoring camp logistics





## » Jabl Qatan Exploration project Area (Base Metals)

- Supervision of drilling program
- Made earth works for trucks and pads for drilling program.
- Core orientation
- Down Hole survey.
- Capping with cement and Label
- Manage and mentoring camp logistics

## » Jabl Guyan Exploration project Area (Base Metals)

- Supervision of drilling program
- Core orientation
- Down Hole survey.
- Capping with cement and Label
- Manage and mentoring camp logistics

شركة الشرق الأوسط  
TRUE EAST





We have finished and completed several drilling projects with different diameters for Exploring Base Metals

## » Jabl Jeza Area ( Exploration for Gold )

- Supervision of drilling program,
- Measuring Core Loss/Gain (Recovery) and RQD measurements
- Core orientation
- Down hole survey camera.
- Capping
- Manage and mentoring camp logistics

## » AL-Seham Area ( Exploration for Gold )

- Supervision of drilling program,
- Measuring Core Loss/Gain (Recovery) and RQD measurements
- Core orientation
- Down hole survey camera.
- Capping
- Manage and mentoring camp logistics.





## » AL-Shakhtalih Area ( Exploration for Gold )

- Supervision of drilling program.
- Measuring Core Loss/Gain (Recovery) and RQD measurements.
- Core orientation.
- Down hole survey camera.
- Capping.
- Manage and mentoring camp logistics.

## » Jabl Hakaran Area ( Exploration for Gold )

- Supervision of drilling program.
- Measuring Core Loss/Gain (Recovery) and RQD measurements.
- Core orientation.
- Down hole survey camera.
- Capping.
- Manage and mentoring camp logistics.

## » Bir Heyan Area (Exploration for Gold)

- Supervision of drilling program.
- Measuring Core Loss/Gain (Recovery) and RQD measurements.
- Core orientation.
- Down hole survey camera.
- Capping.
- Manage and mentoring camp logistics.







## **AL-Mansourah Area (Exploration for Gold)**

- Supervision of drilling program.
- Measuring Core Loss/Gain (Recovery) and RQD measurements.
- Core orientation.
- Down hole survey camera.
- Capping.
- Manage and mentoring camp logistics.



## **Jabl Khurb Area (Exploration for Gold)**

- Supervision of drilling program.
- Measuring Core Loss/Gain (Recovery) and RQD measurements.
- Core orientation.
- Down hole survey camera.
- Capping.
- Manage and mentoring camp logistics.



## **Jabl Jeza Area (Second phase Infill Bore Holes)**

- Supervision of drilling program.
- Measuring Core Loss/Gain (Recovery).
- Core orientation.
- Geological core logging and RQD measurements.
- Sample description and dispatch.
- Down hole survey camera.
- marking samples, Photography, cutting and Core Sampling.
- Capping.
- Manage and mentoring camp logistics.





# Geotechnical Drilling

## » Geotechnical Drilling Supervision for SENET Consultant project

- Supervise, profile and log cores, depth to be determined and specified by the Geotechnical Engineer, drilled by the Geotechnical Drilling Contractor.
- Supervise, profile and log test pits, depth to be determined and specified by the Geotechnical Engineer. Responsibility for the excavation of the test pit is to be clarified in each purchase order.
- Supervise and subsequently interpret SPT's taken by the Geotechnical Drilling Contractor.
- Interpret other geotechnical information including previous geotechnical reports by others.
- Provide Classification of in-situ and/or borrow pit materials for potential use in soil improvements.
- Make all the necessary arrangements for soil samples to be tested either in country or in RSA at reputable test facilities and the management of these Facilities.
- Compile the Draft and Final Geotechnical reports.







## **Geotechnical Drilling ALmasane AL Kobra project**

- Drilling boreholes to a depth ranging between 15 and 30.0 meters as plan of Geotechnical Consultant.
- In situ testing and sampling of overburden soil by performing Standard Penetration tests (SPTs) at the specified depth intervals and coring in the rock strata together with measurement of rock core recovery and rock quality designation (RQD).
- Conducting falling head permeability tests in selected boreholes.
- Performance of one (01) down-hole test at specified interval in pre drilled boreholes.
- Testing representative samples of subsurface materials in our soil testing laboratory.
- Preparation of initial geotechnical report presenting the results of completed investigation points together with the field and laboratory testing data and recommendations for foundations design and construction.



# Survey Projects

## » Differential Global Positioning System (DGPS) at Al Godeyer mineral exploration prospect

The purpose of the DGPS static survey is to derive the coordinates and heights of new polygon points from existing 'known' reference stations by following the same system (WGS-84).

- 1- made the benchmark with a special type of aluminum plate which is 50 cm ×50cm concrete
- 2- Observe static with Trimble DGPS.
- 3- Used 2 receivers of Trimble for static and observe each point.
- 4- Data Taken from receiver and process the data to make report with TBC program.

## » Quantity Survey of Clinker and Raw materials at Old Yamama Cement Company in Riyadh.

1. Used GPS + Laser Total station survey tool to obtain high accuracy 3D locations and coordinates of any desirable points (X, Y, and Z).
2. Accuracy of each point reach easily to 5mm, and max of 6cm random errors.
3. Basic points are taken to make basic surface.
4. Movable surface also taken.
5. Both surfaces are processed through AutoCAD and Surfer to make terrain and volume grid.
6. Total quantity are calculated automatically and results shown:
  - a. total current volume.
  - B. changes in volume if occurs.







## **Quantity Survey of Clinker and Raw materials at New Yamama Cement Company in Riyadh.**

1. Used GPS + Laser Total station survey tool to obtain high accuracy 3D locations and coordinates of any desirable points (X, Y, and Z).
  2. Accuracy of each point reach easily to 5mm, and max of 6cm random errors.
  3. Basic points are taken to make basic surface.
  4. Movable surface also taken.
  5. Both surfaces are processed through AutoCAD and Surfer to make terrain and volume grid.
  6. Total quantity are calculated automatically and results shown:
    - a. total current volume.
    - B. changes in volume if occurs
- our GPS tool are preferred to execute quantity survey and all land survey requirements, due to high quality results and human errors are less than other survey methods.



## **Quantity Survey of Clinker and Raw materials at Tabuk Cement Company.**

1. Used GPS + Laser Total station survey tool to obtain high accuracy 3D locations and coordinates of any desirable points (X, Y, and Z).
2. Accuracy of each point reach easily to 5mm, and max of 6cm random errors.
3. Basic points are taken to make basic surface.
4. Movable surface also taken.
5. Both surfaces are processed through AutoCAD and Surfer to make terrain and volume grid.
6. Total quantity are calculated automatically and results shown:
  - a. total current volume.
  - B. changes in volume if occurs.



## TRUE EAST-SATRA

TRUE EAST & SATRA has a Joint-Venture to provide a diversified range of services such as Mining preparation and services, Mineral exploration drilling, inclined galleries up 40° and ventilation shaft to communicate different levels.

The experience and the technical capacity acquired over more than 25 years experience in the execution of all underground works in both Mining and Civil works, making us an excellent candidate for the implementation of work in competition.

## Projects

### Rio Narcea Gold Mines



#### RÍO NARCEA GOLD MINES.

Infrastructure development to exploit ore (mainly gold) using sublevel caving minning method in Mina Carlés belonging to OROVALLE MINERALS S.L. in the North of Spain, in the Department of Asturias.

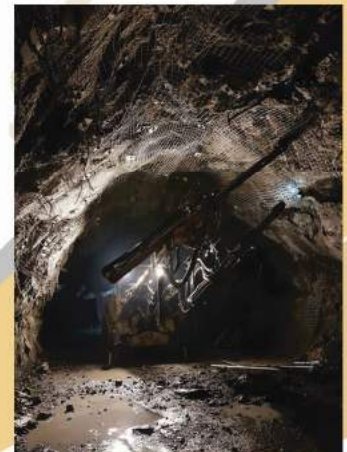




# Rio Narcea Gold Mines



## شركة الشرق الحقيقي



# RIYADH METRO UNDERGROUND, LINE 5.(FAST)

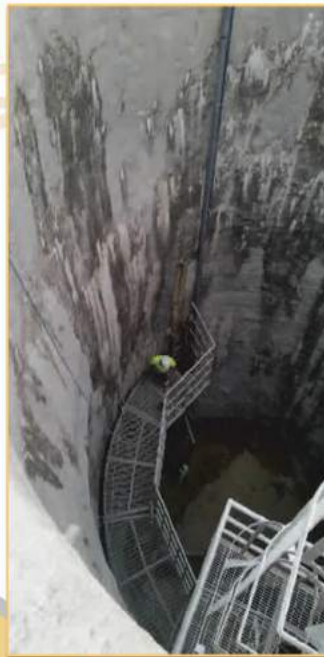
قطار الرياض  
riyadh metro



To connect main tunnel of Riyadh underground and ability different services, shats and galleries are digged working for fast CONSORTIUM

## » Two different sections in base the services requiered:

- » Larger galleries for Ventilation with 75 m<sub>2</sub> cross section.
- » Smaller galleries to pumping and emergency exit 25 m<sub>2</sub> cross section.





## ROOM AND TUNNEL LA NUEVA PIT (NAVARRA)

» To minimize environmental impact of primary crushing and reduce the haul distance, a new project was developed, including an underground room to install the primary milling that was fed since an upper level for a Raise Boring 5m in diameter.

From this room, the product is transported to the stockpile area through a tunnel 475m.

» The same works were made in Arambeltz pit, but the tunnel length was 245m, and Raise Boring had diameter of 4.5 m.

» Tunnel 245 m long.

» Shaht with 4,5 m diameter using Raise Borer.





## RIBEIRADIO-ERMIDA HIDROELECTRIC PLANT

Works in this hidroelectric plant consisted in the digging of :

- » The headrace tunnel with 330 m in length, that carries the water from the dam to turbines.
- » The turbine hall, with 22 m in diameter and 60 m in deep. The refund tunnel, to return the water to the river.



## LUSTRACIÓ AV. WITH VENTISQUERO DE LA CONDESA CONECTION

- » Among the works of madrid city for the expansion and reform of the M-30 in the city center. 250 m Run in several sections, the mine gallery in section 2.20 x 3.80 m was digged using jackhammer and supported with wood over metalic arches, for subsequent complete with concete to support and to continue further excavation of the tunnel advance, known as the German method





# E.T.A.P. D'ABRERAY CARDEDEU CONECTION

TWO utility tunnels to allow access to the main tunnel:

First, with 330 m in length and downward slope of 16% the excavation went through several faults that require careful management.

Second tunnel is 830 m in length and 45 m<sup>2</sup> in cross section.



# Completion Certificates

<b>GOLD &amp; MINERALS COMPANY LTD.</b> <b>ALIMITED LIABILITY COMPANY</b> <b>CAPITAL 2,500,000</b>	 <b>gold &amp; minerals</b> Excellence in Discovery	<b>شركة الذهب والمعادن المحدودة</b> شركة ذات مسؤولية محدودة رأس المال ٢,٥٠٠,٠٠٠ ريال
--	--	--

---



## HAWIAH PROJECT

minerals

### True East Mining Company

Phase 1 and 2 completion  
12,026m Diamond drilling  
September 2019 - May 2020



.....

Brian Hosking (CEO)



.....

المملكة العربية السعودية - الرياض - ص.ب ٩١٠٢ الرمز البريدي ١١٤١٣ - هاتف ٤٦٦٦١١١ - فاكس ٤٦٦٦١١٨ سجل تجاري: ١٠١٠٢٩٢٩١٧ عضوية الغرفة التجارية رقم ٢٣٧٠٢٢  
KINGDOM OF SAUDI ARABIA, P.O.BOX 9102 RIYADH 11413 - HEAD OFFICE TEL. 4646111 - FAX: 4166668 - C.R. 1010292917 CH. OF. COMMERCE No. 237032





GOLD & MINERALS COMPANY LTD.  
LIMITED LIABILITY COMPANY MIXED  
CAPITAL 81,300,180



شركة الذهب والمعادن المحدودة  
شركة ذات مسؤولية محدودة مختلطة  
رأس المال ٨١,٣٠٠,١٨٠ ريال



# HAWIAH PROJECT

## True East Mining Company

Phase 3 and 4 Completion

29,691m Diamond drilling

October 2020 -October 2021

Brian Hosking (CEO)



المملكة العربية السعودية - الرياض - ص.ب ٩١٠٢ الرمز البريدي ١١٤١٣ - هاتف: ٠١١٤٦٤٦١١١ - فاكس: ٠١١٤٦٦٦٦٨ - سجل تجاري: ١٠١٠٢٩٢٩١٧ - عضوية لفرفة التجارية رقم ٢٣٧٠٣٢  
KINGDOM OF SAUDI ARABIA, P.O.BOX 9102 RIYADH 11413 - HEAD OFFICE TEL. 0114646111 FAX : 0114166668 C.R.1010292917 CH. OF COMMERCE No. 237032





### Riyadh Metro Package 3. Line 4, 5 & 6 Construction Joint Venture (CJV)

interests, preferential rights, attachments, retention rights or encumbrances of any nature whatsoever which have been or could be asserted by third parties including Subcontractor's personnel, under any legal theory, applicable law or jurisdiction, such as but not limited to materialsmen's labourers', mechanics', subcontractors' and vendors' liens and it shall provide due evidence of the foregoing warranties and representations, if so requested by the Contractor.

Accordingly, Subcontractor agrees to indemnify and hold Contractor and its Employer harmless with the respective successors, assigns, directors, officers, agents, and employees and their properties from and against all costs, losses, damages, claims, causes of actions, judgments and expenses, including attorney's fees arising out of or in connection with claims against Contractor or its property which arise out of the performance of the Subcontract, and which may be asserted by any of its suppliers, vendors, subcontractors of any tier, or any of their employees or agents or otherwise resulting from the breach of the foregoing warranties and representations.

This "Completion Certificate" shall be without prejudice to and shall not relieve the Subcontractor from any and all obligations under the Subcontract which at the date of issuing this Certificate have not been expressly discharged by the Contractor or which, by their nature survive completion of the Works including without limitation, warranties guarantees and indemnities; such obligations to be discharged strictly in accordance with the terms of the Subcontract.

Subcontractor acknowledges that the Defects Liability Period for the Works shall start from the date of issuance of this Certificate.

All references to the term "Subcontract" in this Certificate shall be deemed to include references to any amendments, change orders and other modifications thereto which have been expressly accepted by the Contractor.

This "Completion Certificate" is effective on the date last signed.

FAST Consortium LLC.

By: I. Gutierrez  
Title: COV PM  
Date: 20/5/17

True East Est.

By: Bader AlSharif  
Title: GM  
Date: 20/8/17

S.A. de Trabajos Subterráneos (SATRA)

By: D. JAVIER GARCIA PELAEZ  
Title: LEGAL REPRESENTATIVE  
Date: May 16, 2017



S.A. PARA TRABAJOS SUBTERRANEOS  
A-33126244  
C/ Muñoz Degraín, 5 - 1ª izqda.  
Tifnos.: 985 23 77 89/73  
33007 OVIEDO



*[Handwritten signature]*







Riyadh Metro Package 3. Line 4, 5 & 6  
Construction Joint Venture (CJV)

M3-CJV-EDC-GCMSC-GEN-000270

**CERTIFICATE OF COMPLETION FOR LINE 5**

With reference to the LUMP SUM SUBCONTRACT referenced CNTR-CJV-0637 (0631) dated April 5, 2016, (the "Subcontract") entered between the undersigned FAST Consortium LLC, formerly known as FCC Saudi LLC (the "Contractor") and True East Est. - S.A. de Trabajos Subterráneos (SATRA) (the "Subcontractor") for Excavation Works for Ventilation Galleries in Line 5 (the "Project") in Riyadh Kingdom of Saudi Arabia, and based on Clause 7.4, Subcontract Price of the Subcontract;

Payment by us (Line 5) of the corresponding approved invoices (i) 1010331547 dated March 21, 2017 for the amount of eighteen thousand three hundred sixty USD (USD 18.360,00) to SATRA and (ii) R.M010 dated April 26, 2017 for the amount of seven thousand two hundred USD (USD 7.200,00) to True East Est. shall be deemed to be in full and final settlement of all equipment and materials supplied and services or activities rendered (the "Works"), or any other amounts due in connection with, resulting from or arising under the performance by Subcontractor of the Subcontract.

Contractor hereby declares and certifies that as per the date of the execution of this Certificate, the Works has been satisfactory completed and as of this day it is accepted as complete subject to the terms and conditions of the Subcontract and Specifications.

Nevertheless, Contractor informs Subcontractor that this Certificate does not constitute an acceptance of any Work not in accordance with the Subcontract Documents nor is it a release of the Subcontractor's obligation to complete the Works in accordance with the Subcontract Documents.

In consideration of the said final payment, Subcontractor, on its behalf and its agents, representatives, successors, subsidiaries, parent companies and all other affiliated of every tier and all person or entities claiming through them (including without limitation insurers) agree to hereby unconditionally waive, dismiss, release and forever discharge the Contractor from all claims, demands and disputes as well as any liabilities, responsibilities and obligations of any nature whatsoever relating to, arising under or in connection with the Subcontract, including but not limited to, all claims for additional works or services, (interest accrued in respect of payments), claims derived from omissions or errors Contractor may have incurred in calculating the quantities or unit prices/rates regarding the Work's certificates, claims relating to price revision or escalation, claims regarding unforeseen circumstances encountered during the performance of the Subcontract, etc., whether such claims are (or could have been) based in contract tort, equity, law or otherwise asserted under any legal theory.

Consequently, this "Completion Certificate" is an accord and satisfaction of the received by Subcontractor of the full contractual amount as well as a discharge to Contractor's benefit and shall constitute conclusive evidence for all purposes and in any proceedings whatsoever between the Contractor and the Subcontractor that the Contractor has satisfied its obligations in all regards towards the Subcontractor under the Subcontract.

Subcontractor hereby further certifies, represents and warrants that it has settled all debts, liabilities and obligations contracted or incurred with third parties in connection with the Subcontract and that, therefore, the Works are free from any liens, claims, charges, security



# TRUE EAST-SATRA List of Equipment

**TRUE EAST- SATRA List of Equipment**

S#	Machine	Specifications	Number
1	Diamond drilling Rig	TETRA	1
2	Diamond drilling Rig	BORE TECK	3
3	Jumbo	Atlas Copco E2C	1
4	Jumbo	Atlas Copco L2C	1
5	Jumbo	Tamrock Paramatic H205	2
6	Jumbo	Tamrock minimatic H207	3
7	Jumbo	Tamrock CTH119 2F	1
8	Jumbo	Atlas Copco Boomer 282	2
9	Roadhead Miners	Alpine AM 50	17
10	Shotcrete Spayed Machine	Putzmeister PM 500	1
11	Shotcrete Spayed Machine	Putzmeister WKM 103	1
12	Shotcrete Spayed Machine	Putzmeister WKM 102	2
13	Scooptram	GHH LF 12.3	2
14	Scooptram	Atlas Copco ST 1030	3
15	Wheel Loader	Doosan DL 300	2
16	Crawler Excavator	Doosan DX 225 LC	3
17	Crawler Excavator	CAT 307 C	5
18	Back Hoeloaders	CAT 408	2
19	MineTrucks	GHH - MK 30	2
20	Telehandlers	JCB MT-X 1740 SL	2
21	Fork lift	Hitachi H12.00XM 12 ton diesel	2
22	Mobile crane	Doosan 100 Ton	1
23	Mobile crane	Doosan 70 Ton	1
24	Hydraulic Rock Drill JD 800	JUNJIN csm drilling diameter ( 65-102mm)	2
25	Hydraulic Rock Drill JD 1500 E	JUNJIN csm drilling diameter ( 102-150 mm)	1
26	Excavator	SANY SY235C - 24200 kg	7
27	Excavator	SANY SY135 C - 14870 kg	2
28	MineExcavator	SANY SY 60 - 5780 kg	2
29	Dumper	Volvo A25	3
30	Dumper	Volvo A20	6
31	Dumper	Ausa 600 APG	1
32	Air compressor	Ingersoll Rand SSR-M90	2
33	Power unit	GESAN DVS 500	3
34	MIXER	Huron H4	5
35	Fan	Gel 9-75	6





# TRUE EAST SATRA List Measure Projects

CONTRACT NO	DESCRIPTION	SITE	CONTRACT DATE	FINISH DATE
C98-1381-/D5446-	AVANCE LABORES ACCESO A MACIZO C/MARIA 11@Y 12@	SANTIAGO	6/19/1998	4/30/2001
C99-1577-/D5446-	AVANCE GALERIA MINADOR 5 NIVEL MARIANA MELENDEROS	SANTIAGO	7/7/1999	5/8/2001
C99-1647-/D5446-	AVANCE CON MINADOR POZO 762	SAN NICOLAS	3/21/2000	5/1/2002
C02-1992-/D5427-	PLANO INCUNADO DESCENDENTE ACCESO CAPA 2 FAYONA TSAL3	PUMARABULE	3/5/2002	6/1/2004
C02-2009-/D5442-	ACCESOS Y GUIA C/30 S-D X9	FIGAREDO	4/12/2002	3/22/2006
C02-2017-/D5411-	AVANCE CON MINADOR GALERIA EN CAPA 1 GENERALIA SUR 3 SUBPLANTA	CARRIO	4/14/2002	6/30/2005
C02-2093-/D5414-	ESTERIL SUB10 Y PLANO 38 SUB 10@10@ (ACCESO SUR SUB 10@)	SOTON	11/20/2002	6/4/2007
C02-2097-/D5411-	AVANCE PLANO INCUNADO ENTRE 3@ Y5@ SUB PLANTA	CARRIO	01/15/2003	11/02/2006
C02-2164-/D5414-	AVANCE GALERIA GENERALIAS	SOTON	05/29/2003	10/02/2007
C03-2174-/D5446-	AVANCE GALERIA MINADOR MOUNO NIVEL 8 MELENDEREOS	SANTIAGO	04/23/2001	01/25/2005
C03-2218-/D5422-	AVANCE GUIA TRABANCO OESTE 10@ PLANTA	M@ LUISA	05/30/2003	07/03/2006
C04-2389-/D5457-	AVANCE SUBNIVELES CON MINADOR C/7@ POZO 8@ II A 9@ ESTE	MONT SACRO	04/30/2004	07/01/2006
C04-2509-/D5457-	AVANCE SUBNIVELES CON MINADOR C/7@ POZO 8@ III 9-@ ESTE AREA MONT SACRO	MONT SACRO	04/01/2005	11/02/2007
C05-2526-/D5453-	AVANCE SUBNIVELES CON MINADOR POZO 7, 776@ PLANTA ESTE	SAN NICOLAS	06/13/2005	02/02/2009
C05-2534-/D5453-	AVANCE SUBNIVELES CON MINADOR POZO 7-772@ PLANTA OESTE	SAN NICOLAS	08/02/2005	09/01/2007
C05-2590-/D5416-	AVANCE GUIAS NIVELES C/MOUNO T7-4@ Y 8@	CANDIN	01/30/2006	03/01/2008
C06-2731-/D5453-	REPROFUNDIZACION POZO N@ 2	SAN NICOLAS	02/13/2007	11/03/2010
C06-2756-/D5414-	AVANCE Y SUTIRAJE CON MINADOR EN C/5 VETAS Y 1@ REFUGIO 10/9@	SOTON	12/14/2006	02/02/2010
C07-2798-/D5416-	AVANCE GUIAS CON MINADOR N-S C/RAIOLA SUB 8@ PLANTA	CANDIN	04/26/2007	06/01/2010
C08-2993-/D5416-	AVANCE GUIAS NIVELES 1 Y 2 C/MOUNO TRANSVERSAL 8 4@/SUB 8@	CANDIN	02/17/2009	06/01/2010
C08-3005-/D5457-	AVANCE SUTIRAJE CON MINADOR 5@ NIVEL CAPA 9@, POZO 8@ IV	MONT SACRO	02/23/2009	02/01/2010
C10-3148-/D5453-	EXPLOTACION DE UN PANEL DE LA CAPA 7@ ESTE EN 9TE 7@ PLANTA	SAN NICOLAS	05/13/2010	12/14/2012
C10-3226-/D5414-	AVANCE Y SUTIRAJE CON MINADOR C/M@ LUISA 7@9@ PLTA ZONA SUR	SOTON	04/05/2011	09/01/2015
C11-3260-/D5416-	AVANCE CON MINADOR Y SUTIRAJE CAPA SENRINA TO-ENTRE SUB 8@ Y 8@ PLANTA	CANDIN	06/16/2011	06/01/2013
C11-3270-/D5411-	AVANCE CAMARA DE MONTAJE ENTRE 6@ Y 7@ SUBPLANTA	CARRIO	09/22/2011	10/03/2012
C11-3289-/D5422-	AVANCE MINADOR GUIA 7 NOTRE SUB11 @ PLTA	M@ LUISA	02/24/2011	05/02/2014
C-15-3650-/D5446-	AVANCE C/MINADOR SOBRE CAPA MOUNO EN LOS NIVELES 9 ESTE 11 Y 12 OESTE	SANTIAGO	23/01/2015	WORKING
C15-3651-/D5453-	AVANCE Y SUTIRAJE C/MINADOR EN LA CAPA 7@ POZO 788 ZONA ESTE	SAN NICOLAS	30/11/2015	WORKING
C15-3652-/D5446-	AVANCE Y SUTIRAJE C/MINADOR, EN LA CAPA 7@ TRANSVERSAL 5@ NIVEL ZONA ESTE	SAN NICOLAS	30/11/2015	WORKING
C15-3662-/D5411-	DEMONTAJE, TPTE, Y MONTAJE CINTA TRANSPORTADORA	CARRIO	30/09/2015	WORKING





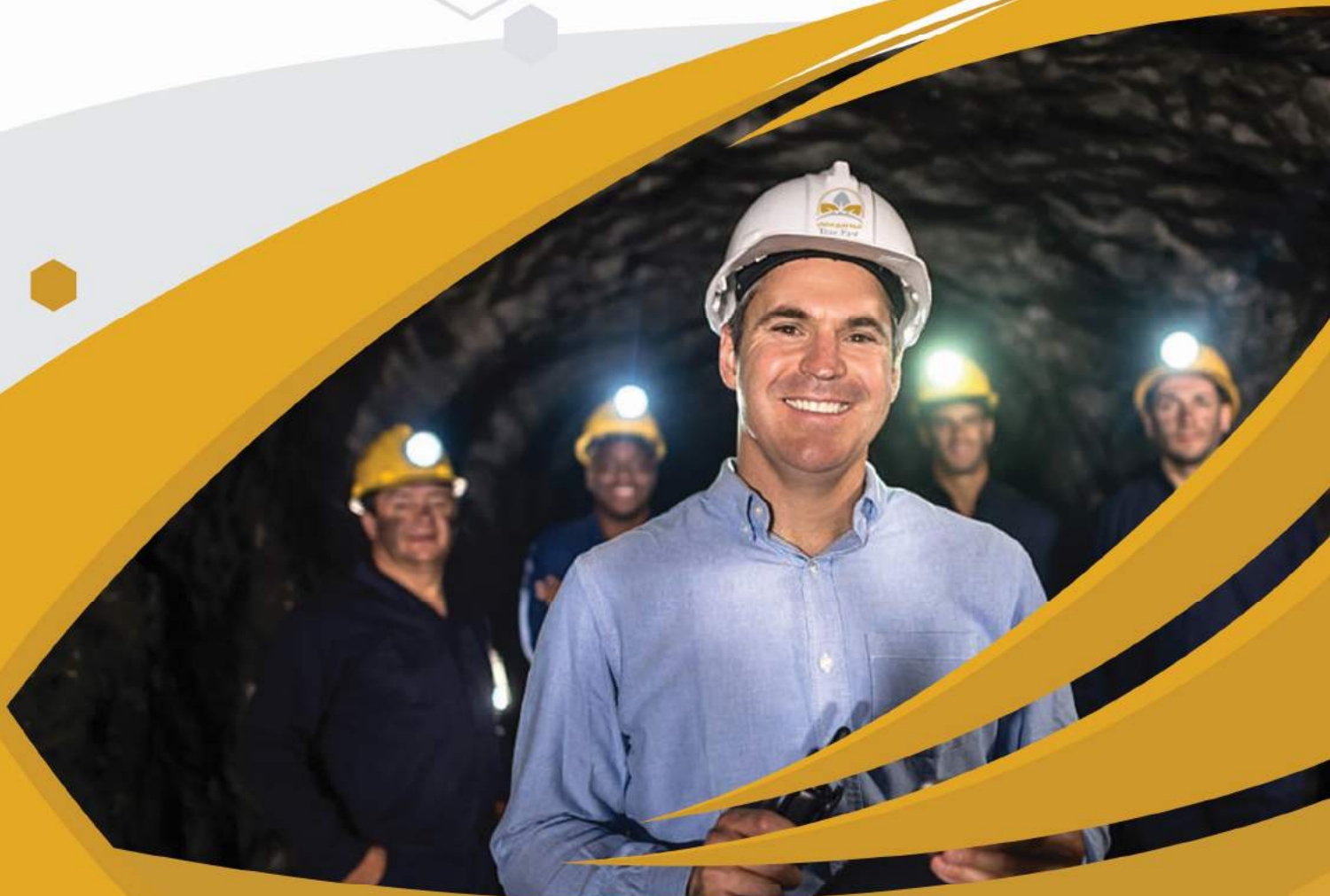


YOUR QUALITY MINING PARTNER



## OUR SUCCESS PARTNERS





 +966 (011) 2911108

 [www.tru-east.com](http://www.tru-east.com)  
[info@tru-east.com](mailto:info@tru-east.com)

 Kingdom of Saudia Arabia - Riyadh  
Salahudeen Dist - King Abdulaziz Road

 Egypt office : 32nd El Obour buildings  
Salah Salem St.Heliopolis, Cairo.

**YOUR QUALITY MINING PARTNER**